



THE MOST TRUSTED NAME
IN PROFESSIONAL COATING TECHNOLOGIES

element¹¹⁹

2026 TECH CATALOG

Proprietary ultra-slick ceramic technology for
Auto, Aircraft, and Marine.

Element119.com / SystemX.com



Made in USA



OFFICIAL COATING



SPEC APPROVED

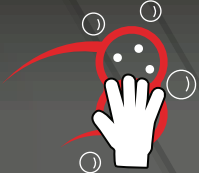


PARTNER

APPLICATION



If contaminated, use a clay bar to clean. If paint correction is required, do so before application.



Wash and completely dry surfaces to be coated.



Clean the paint using a 50% IPA (isopropyl alcohol) to water mix in a trigger sprayer. Mist the paint then wipe down with a microfiber towel.



Wipe on coating by hand using a sponge or coating block, panel by panel. After wiping on wait 60-240 seconds to flash (depending on temp) then buff off with a microfiber towel.



Wait 20 minutes before driving, and 6 hours before getting wet.

MAX^{G+}

CERAMIC NANO COATING



PRODUCT OVERVIEW



System X Max G+ provides super-slick and glossy paint protection with previously unachievable levels of durability, hardness, and chemical resistance. Thicker than any coating, Max G+ is ready to protect in the most extreme environments. System X Max G+ has a **LIFETIME WARRANTY** on automobiles & motorcycles, 5-Year warranty on boats, 3-Year warranty on powersports, RV's, & fleet vehicles, and 10-Year warranty on aircraft when installed by an Accredited Installation Center and annual inspection requirements are met.

TECHNICAL DATA

EFFECTIVENESS	10+ years depending on environmental factors
PENCIL HARDNESS	9H
APPLICATION	Wipe on / buff off application or use HVLP gun with 0.8mm tip and buff off by hand
BOTTLE SIZE	20mL, 65mL, 275mL, 4L
SHELF TIME	18 months from shipment date when unopened and stored dry at 13°C (55°F) to 29°C (85°F)
APPEARANCE	Clear / High Gloss
FILM THICKNESS	9 µm
CHEM. RESISTANCE	Outstanding
TEMP. RESISTANCE	> 760°C (1400°F)
SALT SPRAY	(ASTM B117) @ 35°C (95°F), 5% salt concentration, > 400 hrs to first signs of corrosion
ADHESION CROSS-CUT TAPE	(ASTM D3359) 5b (0%, none)
MANDREL BEND	(ASTM D522) 0% @ 180° rotation
IMPACT	(ASTM D2794) 80/80 in/lbs
COVERAGE	180 sq feet (16.7m2) per 100mL
DRY TIME	40 minutes
CURE TIME	Initial cure in 4 hours, full cure in 3 days
UV PROTECTION	Yes

REGISTERS WITH



Also available in: **G+** Hyper Gloss **MF** Matte Friendly

APPLICATION



If contaminated, use a clay bar to clean. If paint correction is required, do so before application.



Wash and completely dry surfaces to be coated.



Clean the paint using a 50% IPA (isopropyl alcohol) to water mix in a trigger sprayer. Mist the paint then wipe down with a microfiber towel.



Wipe on coating by hand using a sponge or coating block, piece by piece. After wiping on wait 60-240 seconds to flash (depending on temp) then buff off with a microfiber towel.



Wait 20 minutes before driving, and 6 hours before getting wet.

PRO+

CERAMIC NANO COATING



PRODUCT OVERVIEW



System X Pro+ is an ultra-hydrophobic ceramic coating for automotive paint. Pro+ is a semi-permanent 9H self-cleaning coating with high gloss. Pro has passed rigorous Boeing approval testing and has been evaluated for hardness as well as alkali and salt resistance by SGS laboratory. This ensures Pro is 100% safe for your paint, adheres on a molecular level, and withstands tough environmental conditions. Pro+ has a **SIX YEAR WARRANTY** on automobiles when installed by an Accredited Installation Center and annual inspection requirements are met.

TECHNICAL DATA

EFFECTIVENESS	6 years depending on environmental factors
PENCIL HARDNESS	9H
APPLICATION	Wipe on / buff off application or use HVLP gun with 0.8mm tip and buff off by hand
BOTTLE SIZE	65mL, 275mL, 4L
SHELF TIME	18 months from shipment date when unopened and stored dry at 13°C (55°F) to 29°C (85°F)
APPEARANCE	Clear / High Gloss
FILM THICKNESS	5 µm
CHEM. RESISTANCE	Excellent
TEMP. RESISTANCE	> 760°C (1400°F)
SALT SPRAY	(ASTM B117) @ 35°C (95°F), 5% salt concentration, > 350 hrs to first signs of corrosion
ADHESION CROSS-CUT TAPE	(ASTM D3359) 5b (0%, none)
MANDREL BEND	(ASTM D522) 0% @ 180° rotation
IMPACT	(ASTM D2794) 80/80 in/lbs
COVERAGE	200 sq feet (18.6m2) per 100mL
DRY TIME	20 minutes
CURE TIME	Initial cure in 4 hours, full cure in 3 days
UV PROTECTION	Yes

REGISTERS WITH



APPLICATION



If contaminated, use a clay bar to clean. If paint correction is required, do so before application.



Wash and completely dry surfaces to be coated.



Clean the paint using a 50% IPA (isopropyl alcohol) to water mix in a trigger sprayer. Mist the paint then wipe down with a microfiber towel.



Wipe on coating by hand using a sponge or coating block, piece by piece. After wiping on wait 60-240 seconds to flash (depending on temp) then buff off with a microfiber towel.



Wait 20 minutes before driving, and 6 hours before getting wet.

CRYSTAL+
CERAMIC NANO COATING



PRODUCT OVERVIEW



System X Crystal+ ceramic coating is a professional-grade coating that lasts for up to 3 years offering superior semi-permanent gloss and protection. Crystal+ interlocks part of its molecular structure with the surface molecules of your paintwork so you get a coating that will not be washed off like a wax or sealant. Crystal+ has passed rigorous Boeing approval testing which ensures 100% safety for paint. Utilizing our proprietary ceramic technology, Crystal+ is a high performer against friction, heat, and solvents.

TECHNICAL DATA

EFFECTIVENESS	3 years depending on environmental factors
PENCIL HARDNESS	9H
APPLICATION	Wipe on / buff off application or use HVLP gun with 0.8mm tip and buff off by hand
BOTTLE SIZE	65mL, 275mL, 4L
SHELF TIME	18 months from shipment date when unopened and stored dry at 13°C (55°F) to 29°C (85°F)
APPEARANCE	Clear / High Gloss
FILM THICKNESS	5 µm
CHEM. RESISTANCE	Very Good
TEMP. RESISTANCE	> 538°C (1000°F)
SALT SPRAY	-
ADHESION CROSS-CUT TAPE	(ASTM D3359) 5b (0%, none)
MANDREL BEND	(ASTM D522) 0% @ 180° rotation
IMPACT	-
COVERAGE	200 sq feet (18.6m2) per 100mL
DRY TIME	20 minutes
CURE TIME	Initial cure in 4 hours, full cure in 3 days
UV PROTECTION	Yes

REGISTERS WITH



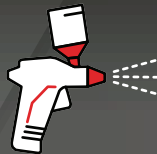
APPLICATION



Wash and completely dry surfaces to be coated.



Clean the paint using a 50% IPA (isopropyl alcohol) to water mix in a trigger sprayer. Mist the paint then wipe down with a microfiber towel.



Gently shake container for 30 seconds. Apply with an HVLP detail spray gun with .8mm tip or siphon fed detail spray gun with a fine to medium tip.

OR



Wipe on coating by hand using a sponge or coating block, panel by panel. After wiping on wait 20-40 seconds to flash (depending on temp) then buff off with a microfiber towel.



Wait 60 minutes before moving. Wait 48 hours before submerging in water.

XTREME
CERAMIC NANO COATING



PRODUCT OVERVIEW



The high corrosiveness of salt, UV rays, acids, alkalies, exhaust, and algae/shell contaminants can cause structural and cosmetic damage that impair your craft's performance and ruin its appearance. Harnessing the most durable ceramic technology available, Xtreme is our best performance against friction, heat, and solvents. The extreme gloss finish will not yellow, crack, peel, or delaminate through the year. Upon application you can have the utmost confidence that your vessel will be rendered virtually immune to the adverse weathering effects of both underwater and above-water environments, conditions, and elements. For the ultimate marine protection, look no further.

TECHNICAL DATA

EFFECTIVENESS	2 years depending on environmental factors
PENCIL HARDNESS	9H
APPLICATION	Wipe on / buff off application or use HVLP gun with 0.8mm tip and buff off by hand
BOTTLE SIZE	20mL, 65mL, 275mL, 4L
SHELF TIME	18 months from shipment date when unopened and stored dry at 13°C (55°F) to 29°C (85°F)
APPEARANCE	Clear / High Gloss
FILM THICKNESS	8 µm
CHEM. RESISTANCE	Very Good
TEMP. RESISTANCE	> 538°C (1000°F)
SALT SPRAY	(ASTM B117) @ 35°C (95°F), 5% salt concentration, > 350 hrs to first signs of corrosion
ADHESION CROSS-CUT TAPE	(ASTM D3359) 5b (0%, none)
MANDREL BEND	(ASTM D522) 0% @ 180° rotation
IMPACT	(ASTM D2794) 80/80 in/lbs
COVERAGE	150 sq feet (14m2) per 100mL
DRY TIME	40 minutes
CURE TIME	Initial cure in 4 hours, full cure in 3 days
UV PROTECTION	Yes

REGISTERS WITH



APPLICATION



If contaminated, use a clay bar to clean. If paint correction is required, do so before application.



Wash and completely dry surfaces to be coated.



Clean the trim/plastic using a 50% IPA (isopropyl alcohol) to water mix in a trigger sprayer. Mist the paint then wipe down with a microfiber towel.



Wipe on coating by hand using a sponge or coating block, piece by piece. After wiping on wait 10-30 seconds to flash (depending on temp) then buff off with a microfiber towel.



Wait 20 minutes before driving, and 4 hours before getting wet.

REVIVE

CERAMIC NANO COATING



PRODUCT OVERVIEW



System X Revive rejuvenates plastics and trims, bringing them back to life and protecting them from future UV fading and wear. Revive acts just like our other ceramics, providing ultra-hydrophobic properties and protection. This product is known to bring out the deepest blacks of factory trims and vehicle plastics. Utilizing our proprietary ceramic technology, Revive is a high performer against UV light and fading.

TECHNICAL DATA

EFFECTIVENESS	2 years depending on environmental factors
PENCIL HARDNESS	-
APPLICATION	By hand with sponge, coating block, or cotton applicator
BOTTLE SIZE	20mL, 275mL, 4L
SHELF TIME	18 months from shipment date when unopened and stored dry at 13°C (55°F) to 29°C (85°F)
APPEARANCE	Clear / High Gloss
FILM THICKNESS	8 µm
CHEM. RESISTANCE	Very Good
TEMP. RESISTANCE	-
SALT SPRAY	-
ADHESION CROSS-CUT TAPE	(ASTM D3359) 5b (0%, none)
MANDREL BEND	-
IMPACT	-
COVERAGE	200 sq feet (18.6m2) per 100mL
DRY TIME	40 minutes
CURE TIME	Initial cure in 4 hours, full cure in 3 days
UV PROTECTION	Yes

REGISTERS WITH



APPLICATION



Thoroughly clean surface with a non-oily interior-safe cleaner that leaves no sealant or residue.



Wipe the prepared surface with a damp towel (using water) to remove any remaining cleaning solution residue and dry thoroughly.



Wipe coating by hand using a white applicator pad, section by section. After wiping on, allow product to dwell for 30 seconds.



Wait 4 hours before driving. Do not clean coated surfaces for 1 week.

LVP

LEATHER, VINYL & PLASTIC



PRODUCT OVERVIEW



System X LVP utilizes flexible nanotechnology to provide warranted protection against common spills and stains on leather, vinyl and plastic surfaces. System X LVP preserves your interior's natural look and feel.

TECHNICAL DATA

EFFECTIVENESS	3 Years
PENCIL HARDNESS	-
APPLICATION	Wipe on / buff off application or use HVLP gun with 0.8mm tip and buff off by hand
BOTTLE SIZE	35mL
SHELF TIME	-
APPEARANCE	Clear / High Gloss
FILM THICKNESS	Up to 3 µm
CHEM. RESISTANCE	Outstanding
TEMP. RESISTANCE	> 260°C (500°F)
SALT SPRAY	-
ADHESION CROSS-CUT TAPE	(ASTM D3359) 5b (0%, none)
MANDREL BEND	(ASTM D522) 0% @ 180° rotation
IMPACT	(ASTM D2794) 80/80 in/lbs
COVERAGE	-
DRY TIME	-
CURE TIME	-
UV PROTECTION	-

REGISTERS WITH



APPLICATION



If scratched or pitted, polish glass with a cerium oxide slurry.



Wash and completely dry glass to be coated.



Clean the glass using 100% IPA, a strong solvent, or an industrial glass cleaner.



Wipe onto glass and buff until no residue remains.



Wait 20 minutes before driving.

GLASS+
CERAMIC NANO COATING



PRODUCT OVERVIEW



System X Glass+ protects your windshields, windscreens, windows, mirrors, headlamps, and glass surfaces for up to a full 2 years protecting from micro scratches while multiplying the surface’s hydrophobic properties. System X Glass+ dramatically increases visibility in the rain and makes de-icing in the winter and cleaning insect matter in the summer a breeze. System X Glass+ is truly a breakthrough in glass protection technology. System X Glass+ reduces glare and reduces stone chips with a single application.

TECHNICAL DATA

EFFECTIVENESS	2 years depending on environmental factors
PENCIL HARDNESS	-
APPLICATION	Wipe on / buff off application or use HVLP gun with 0.8mm tip and buff off by hand
BOTTLE SIZE	10mL, 275mL
SHELF TIME	18 months from shipment date when unopened and stored dry at 13°C (55°F) to 29°C (85°F)
APPEARANCE	Invisible
FILM THICKNESS	3 µm
CHEM. RESISTANCE	-
TEMP. RESISTANCE	-
SALT SPRAY	-
ADHESION CROSS-CUT TAPE	-
MANDREL BEND	-
IMPACT	-
COVERAGE	40 sq feet per 10mL
DRY TIME	20 minutes
CURE TIME	Intial cure in 4 hours, full cure in 3 days
UV PROTECTION	Yes

REGISTERS WITH
CARFAX

APPLICATION



Test an inconspicuous area to confirm compatibility.



If surface is not new, wash and dry it before application.



Spray in crisscross pattern assuring 100% coverage. Use dry sponge for tight knits.



Allow product to dry for 30 minutes

TEXTILE
CARPET & FABRIC



PRODUCT OVERVIEW



System X Textile protects all your interior surfaces, such as fabric seats, carpet, leather, and vinyl with a single professional coating. Spills and stains clean up easily and quickly. System X Textile is safe, easy to apply, has no odor, is water based, and dries quickly. Sprayed on by hand and air dried, it provides great protection for your interior without changing the color of your fabrics, or carpet.

TECHNICAL DATA

EFFECTIVENESS	2 years depending on environmental factors
PENCIL HARDNESS	-
APPLICATION	By hand sprayer with microfiber towel or sponge
BOTTLE SIZE	500mL sprayer, 4mL, 20mL
SHELF TIME	-
APPEARANCE	-
FILM THICKNESS	-
CHEM. RESISTANCE	Good
TEMP. RESISTANCE	-
SALT SPRAY	-
ADHESION CROSS-CUT TAPE	-
MANDREL BEND	-
IMPACT	-
COVERAGE	18 sq feet (1.7m2) per 100mL
DRY TIME	30 minutes
CURE TIME	24 hours
UV PROTECTION	Yes



APPLICATION



If contaminated, use a clay bar to clean. If paint correction is required, do so before application.



Wash and completely dry surfaces to be coated.



Clean the wheel using a 50% IPA (isopropyl alcohol) to water mix in a trigger sprayer. Mist the wheel then wipe down with a microfiber towel.



Wipe on coating by hand using a sponge or coating block. After wiping on wait 60-240 seconds to flash (depending on temp) then buff off with a microfiber towel.



Wait 20 minutes before driving, and 4 hours before getting wet.

WHEEL+

CERAMIC NANO COATING



PRODUCT OVERVIEW



System X Wheel+ comprises advanced ceramic technology found in our most durable coatings, blended to become even more corrosion resistant than ever before. This highly chemical-resistant wheel coating works exceptionally well to protect wheels from extremely corrosive and damaging brake dust. System X Wheel+ easily registers to **CARFAX** with the included QR code sticker to maximize vehicle resale value (US & Canada only).

TECHNICAL DATA

EFFECTIVENESS	Up to 3 years depending on environmental factors
PENCIL HARDNESS	9H
APPLICATION	Wipe on / buff off application or use HVLP gun with 0.8mm tip and buff off by hand
BOTTLE SIZE	20mL, 65mL, 275mL, 4L
SHELF TIME	18 months from shipment date when unopened and stored dry at 13°C (55°F) to 29°C (85°F)
APPEARANCE	Clear / High Gloss
FILM THICKNESS	Up to 9 µm
CHEM. RESISTANCE	Outstanding
TEMP. RESISTANCE	> 760°C (1400°F)
SALT SPRAY	(ASTM B117) @ 35°C (95°F), 5% salt concentration, > 400 hrs to first signs of corrosion
ADHESION CROSS-CUT TAPE	(ASTM D3359) 5b (0%, none)
MANDREL BEND	(ASTM D522) 0% @ 180° rotation
IMPACT	(ASTM D2794) 80/80 in/lbs
COVERAGE	180 sq feet (16.7m2) per 100mL
DRY TIME	40 minutes
CURE TIME	Initial cure in 4 hours, full cure in 3 days
UV PROTECTION	Yes

REGISTERS WITH



APPLICATION



Wash and completely dry surfaces to be coated.



Clean the paint using a 50% IPA (isopropyl alcohol) to water mix in a trigger sprayer. Mist the paint then wipe down with a microfiber towel.



Wipe on coating by hand using a sponge or coating block, panel by panel. Buff off with a microfiber towel.



Wait 20 minutes before driving, and 4 hours before getting wet.

RENEW

CERAMIC NANO COATING



PRODUCT OVERVIEW



System X Renew quick ceramic detailer is a professional-grade spray-and-wipe coating that lasts for up to 9 months. Renew can be used as a topper for ceramic coatings or as a gloss and depth booster that also conceals minor swirls. Renew is the quick way to add System X nano protection to your vehicle, plane, or boat. Renew provides exceptional gloss and protection with ultra-hydrophobic properties.

TECHNICAL DATA

EFFECTIVENESS	6-9 months depending on environmental factors
PENCIL HARDNESS	-
APPLICATION	Spray and wipe off by hand
BOTTLE SIZE	500mL sprayer, 5G, 55G
SHELF TIME	18 months from shipment date when unopened and stored dry at 14°C (58°F) to 29°C (85°F)
APPEARANCE	Clear / High Gloss
FILM THICKNESS	-
CHEM. RESISTANCE	-
TEMP. RESISTANCE	-
SALT SPRAY	-
ADHESION CROSS-CUT TAPE	-
MANDREL BEND	-
IMPACT	-
COVERAGE	3-6 vehicles per 500mL
DRY TIME	60 seconds
CURE TIME	3 hours for initial cure, 24 hours for full cure
UV PROTECTION	Yes

REGISTERS WITH



APPLICATION



Wash and completely dry surfaces to be coated.



Wipe on coating by hand using a sponge or coating block. After wiping on wait 60-240 seconds to flash (depending on temp) then buff off with a microfiber towel.



Wait 20 minutes before driving, and 4 hours before getting wet.

TOPCOAT+
CERAMIC NANO COATING



PRODUCT OVERVIEW



System X Topcoat+ combines well-known System X durability with quick-curing ceramic technology to make annual inspections more efficient and economical for your customers. Included Topcoat+ inspection registration card easily tracks and documents the process to maintain the manufacturer's warranty. Inspections are automatically registered to **CARFAX** (US & Canada only).

TECHNICAL DATA

EFFECTIVENESS	Annual maintenance coat
PENCIL HARDNESS	-
APPLICATION	Wipe on / buff off application or use HVLP gun with 0.8mm tip and buff off by hand
BOTTLE SIZE	35mL
SHELF TIME	18 months from shipment date when unopened and stored dry at 13°C (55°F) to 29°C (85°F)
APPEARANCE	Clear / High Gloss
FILM THICKNESS	Up to 3 µm
CHEM. RESISTANCE	Very Good
TEMP. RESISTANCE	> 538°C (1000°F)
SALT SPRAY	-
ADHESION CROSS-CUT TAPE	(ASTM D3359) 5b (0%, none)
MANDREL BEND	-
IMPACT	-
COVERAGE	200 sq feet (18.6m2) per 100mL
DRY TIME	20 minutes
CURE TIME	Initial cure in 3 hours, full cure in 1 day
UV PROTECTION	Yes

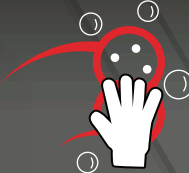
REGISTERS WITH



APPLICATION



Perform any necessary paint correction using paint shop-safe polishing compounds that contain no wax or silicone.



Wash and completely dry surfaces to be coated.



Clean the surface using denatured alcohol or a wax and grease remover. Mist the paint then wipe down with a microfiber towel.



Industrial is only to be applied with an HVLP spray gun. Use a 1mm HVLP spray gun at 10 psi. Purge the air tank to remove any water before spraying and use a water trap/filter before the HVLP gun.



Wait 24 hours before driving, and 24 hours before getting wet.

INDUSTRIAL
CERAMIC HYBRID COMPOSITE



PRODUCT OVERVIEW



The unmatched durability of System X Industrial reduces reapplications, driving cost savings and minimizing operational downtime. System X provides outstanding corrosion protection, shielding metal surfaces from rust and moisture, even in tough conditions. Its superior chemical resistance ensures surfaces remain unaffected in harsh industrial environments, preserving functionality and appearance. Built for daily demands, System X Industrial resists abrasion, preventing scratches and wear to keep surfaces flawless and reduce repair costs. Its UV protection prevents fading, making it idea for outdoor use, while its heat resistance ensures lasting protection in tough conditions.

TECHNICAL DATA

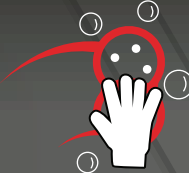
EFFECTIVENESS	5+ years depending on environmental factors
PENCIL HARDNESS	9H
APPLICATION	HVLP gun with 1mm tip. Do not level of buff, use mixed components within 30 minutes.
BOTTLE SIZE	2X 160 mL (320mL)
SHELF TIME	18 months from shipment date when unopened and stored dry at 13°C (55°F) to 29°C (85°F)
APPEARANCE	Clear / High Gloss
FILM THICKNESS	12 µm
CHEM. RESISTANCE	Outstanding
TEMP. RESISTANCE	> 760°C (1400°F)
SALT SPRAY	(ASTM B117) @ 35°C (95°F), 5% salt concentration, > 5000 hrs with no signs of corrosion
ADHESION CROSS-CUT TAPE	(ASTM D3359) 5b (0%, none)
MANDREL BEND	(ASTM D522) 0% @ 180° rotation
IMPACT	(ASTM D2794) 80/80 in/lbs
COVERAGE	62.5 sq feet (5.8m2) per 100mL
DRY TIME	2 hours
CURE TIME	Initial cure in 24 hours, full cure in 14 days
UV PROTECTION	Yes



APPLICATION



Perform any necessary paint correction using paint shop-safe polishing compounds that contain no wax or silicone.



Wash and completely dry surfaces to be coated.



Clean the surface using denatured alcohol or a wax and grease remover. Mist the paint then wipe down with a microfiber towel.



Apply 4 pea sized drops on buffer pad. Working in a 2x2 section, apply pad to surface and ensure product is spread evenly throughout working area.



Remove excess product with microfiber towel and check for finish. If desired finish is completed, proceed to ceramic coating surface.

CORRECT
ONE STEP POLISH 1-STEP



PRODUCT OVERVIEW



System X Correct 1-Step is the ultimate 1-step abrasive polish for medium correction swirl removal and finishing. It's the perfect solution for moderate paint imperfections, offering a smooth and efficient polishing experience across multiple pad and machine types.

TECHNICAL DATA

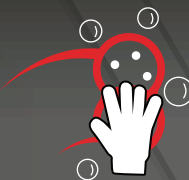
EFFECTIVENESS	Removes 2500 grit sanding marks
MACHINE COMPATIBILITY	Compatible with forced rotation, rotary, and DA machines
PAD COMPATIBILITY	Works with microfiber, foam, and wool pads
GLOSS	Medium
BODY SHOP SAFE	Filler-free, silicone-free, and no dust
APPLICATIONS	Auto, marine, aircraft and industrial finishes
FILM THICKNESS	-
CHEM. RESISTANCE	-
TEMP. RESISTANCE	-
SALT SPRAY	-
ADHESION CROSS-CUT TAPE	-
MANDREL BEND	-
IMPACT	-
COVERAGE	-
DRY TIME	-
CURE TIME	-
UV PROTECTION	-

REGISTERS WITH
CARFAX

APPLICATION



Perform any necessary paint correction using paint shop-safe polishing compounds that contain no wax or silicone.



Wash and completely dry surfaces to be coated.



Clean the surface using denatured alcohol or a wax and grease remover. Mist the paint then wipe down with a microfiber towel.



Apply 4 pea sized drops on buffer pad. Working in a 2x2 section, apply pad to surface and ensure product is spread evenly throughout working area.



Remove excess product with microfiber towel and check for finish. If desired finish is completed, proceed to ceramic coating surface.

CORRECT
HEAVY CUT COMPOUND **HEAVY**



PRODUCT OVERVIEW



System X Correct Heavy is a high-performance heavy correction abrasive compound engineered to remove up to 1500 grit sanding marks with unmatched speed and precision. Designed for use on automotive, aviation and marine finishes, this product delivers rapid defect removal and a consistent, predictable finish—perfect for prepping surfaces prior to System X ceramic coatings.

TECHNICAL DATA

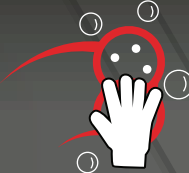
EFFECTIVENESS	Removes 1500 grit sanding marks
MACHINE COMPATIBILITY	Compatible with forced rotation, rotary, and DA machines
PAD COMPATIBILITY	Works with microfiber, foam, and wool pads
GLOSS	Low
BODY SHOP SAFE	Filler-free, silicone-free, and no dust
APPLICATIONS	Auto, marine, aircraft and industrial finishes
FILM THICKNESS	-
CHEM. RESISTANCE	-
TEMP. RESISTANCE	-
SALT SPRAY	-
ADHESION CROSS-CUT TAPE	-
MANDREL BEND	-
IMPACT	-
COVERAGE	-
DRY TIME	-
CURE TIME	-
UV PROTECTION	-

REGISTERS WITH
CARFAX

APPLICATION



Perform any necessary paint correction using paint shop-safe polishing compounds that contain no wax or silicone.



Wash and completely dry surfaces to be coated.



Clean the surface using denatured alcohol or a wax and grease remover. Mist the paint then wipe down with a microfiber towel.



Apply 4 pea sized drops on buffer pad. Working in a 2x2 section, apply pad to surface and ensure product is spread evenly throughout working area.



Remove excess product with microfiber towel and check for finish. If desired finish is completed, proceed to ceramic coating surface.

CORRECT
FINE CUT POLISH FINE



PRODUCT OVERVIEW



System X Correct Fine is the ultimate fine polish for refining and finishing. Engineered for exceptional gloss and depth, it provides the perfect final polish before applying System X ceramic coatings—or can be used as a standalone light polish to rejuvenate surfaces.

TECHNICAL DATA

EFFECTIVENESS	Removes 4000 grit sanding marks
MACHINE COMPATIBILITY	Compatible with forced rotation, rotary, and DA machines
PAD COMPATIBILITY	Works with microfiber, foam, and wool pads
GLOSS	High
BODY SHOP SAFE	Filler-free, silicone-free, and no dust
APPLICATIONS	Auto, marine, aircraft and industrial finishes
FILM THICKNESS	-
CHEM. RESISTANCE	-
TEMP. RESISTANCE	-
SALT SPRAY	-
ADHESION CROSS-CUT TAPE	-
MANDREL BEND	-
IMPACT	-
COVERAGE	-
DRY TIME	-
CURE TIME	-
UV PROTECTION	-

REGISTERS WITH
CARFAX